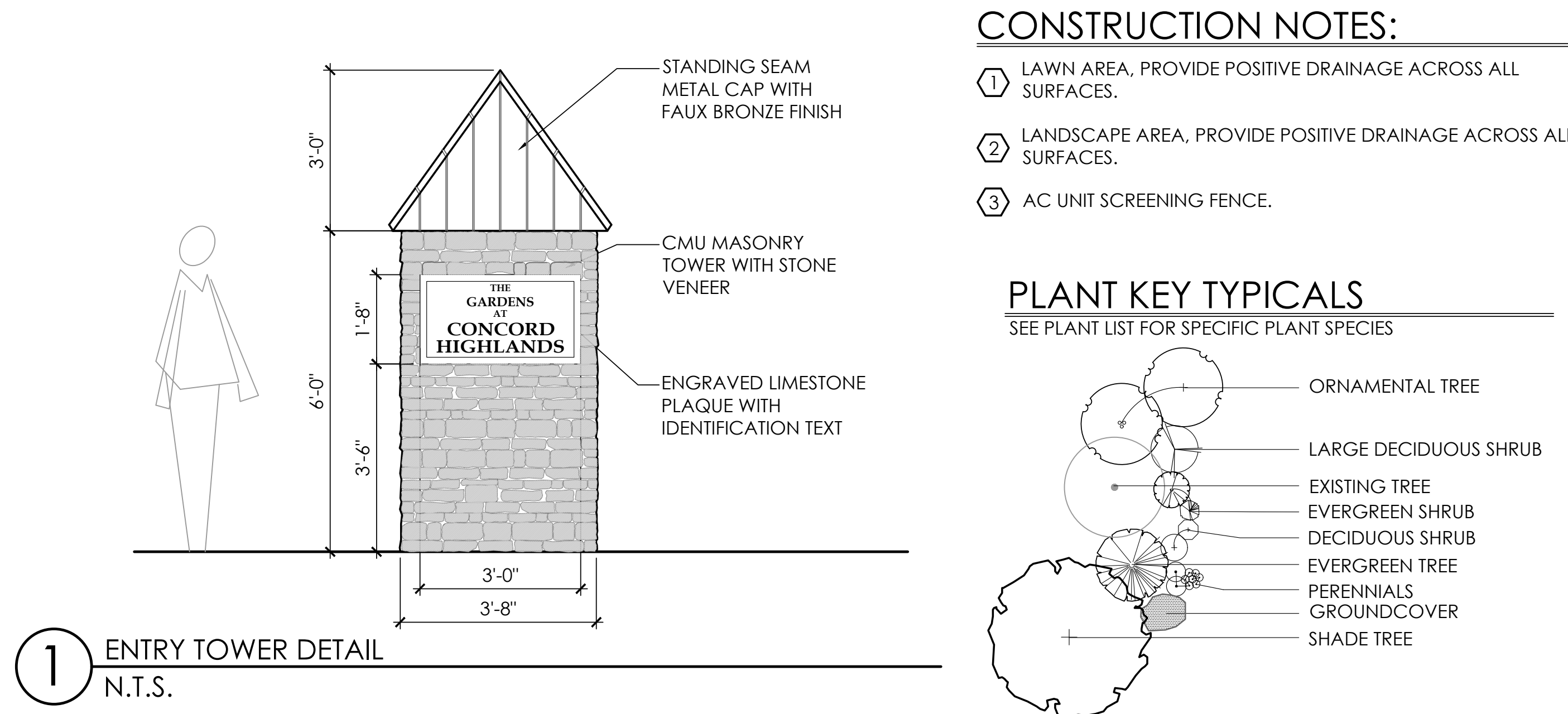


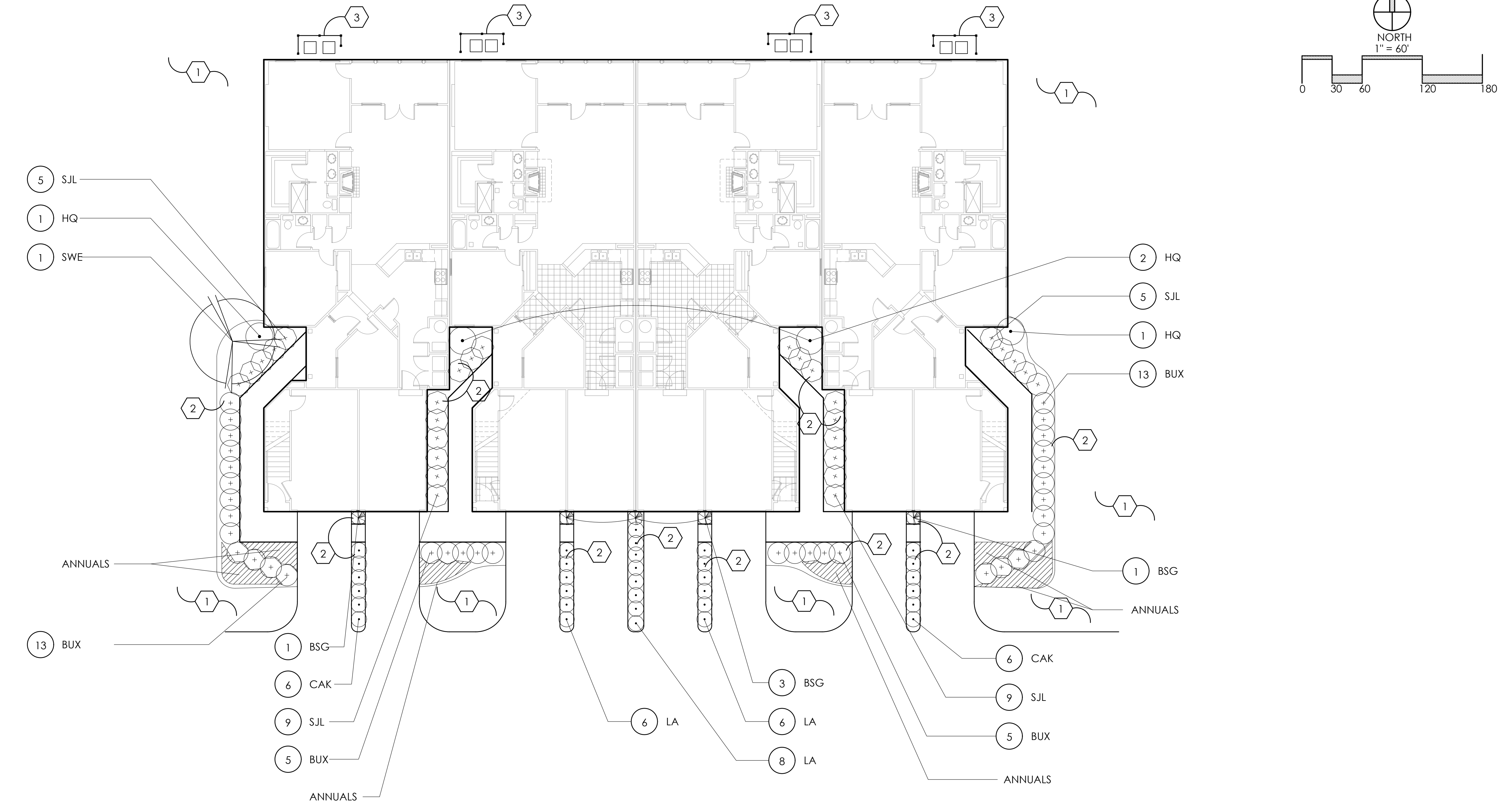
3 OVERALL GARDEN UNIT LANDSCAPE PLAN
SCALE: 1" = 60'



1 ENTRY TOWER DETAIL
N.T.S.

PLANT LIST - OVERALL GARDEN UNITS
(CONTRACTOR RESPONSIBLE FOR ALL PLANTS SHOWN ON PLAN)

QTY	KEY	BOTANICAL NAME	COMMON NAME	SIZE	COND.	REMARKS
TREES						
14	ACE	ACER RUBRUM	RED MAPLE	2.5" CAL.	B&B	
11	AFS	ACER FREEMANNI 'SIENNA'	SIENNA GLEN MAPLE	2.5" CAL.	B&B	
5	CER	CERCIS CANADENSIS	EASTERN REDBUD	8-10' HGT.	B&B	
12	FLO	MALUS FLORIBUNDA	JAPANESE CRABAPPLE	8-10' HGT.	B&B	
4	GPS	GINKGO BILBOA 'PRINCETON SENTRY'	PRINCETON SENTRY GINKGO	2.5" CAL.	B&B	
12	GTS	GLEDTISIA TRIACANTHOS F. INERMIS 'SKYCOLE'	SKYLINE HONEYLOCUST	2.5" CAL.	B&B	
3	MAC	MALUS 'CARDINAL'	CARDINAL CRABAPPLE	8-10' HGT.	B&B	
12	PLA	PLATANUS x ACERIFOLIA 'BLOODGOOD'	BLOODGOOD LONDON PLANE TREE	2.5" CAL.	B&B	
13	SWE	MAGNOLIA VIRGINIANA	SWEETBAY MAGNOLIA	8-10' HGT.	B&B	
8	ULM	ULMUS 'ACCOLADE'	MORTON ELM	2.5" CAL.	B&B	
7	ZEL	ZELKOVA SERRATA 'GREEN VASE'	GREEN VASE ZELKOVA	2.5" CAL.	B&B	
48	PGL	PICEA GLAUCA	WHITE SPRUCE	5-6' HGT.	B&B	
48	PAB	PICEA ABIES	NORWAY SPRUCE	5-6' HGT.	B&B	
48	FINI	PINUS STROBUS	WHITE PINE	5-6' HGT.	B&B	
3	AMC	AMELANCHIER CANADENSIS	CANADIAN SERVICEBERRY	7'-8' HT.	B&B	MULTI-STEM
6	BET	BETULA POPULIFOLIA	GRAY BIRCH	2.5" CAL.	B&B	MULTI-STEM
6	MJ	MAGNOLIA 'JANE'	JANE MAGNOLIA	6-7' HT.	B&B	
3	QC	QUERCUS MACROCARPA	BURR OAK	2.5" CAL.	B&B	
2	QP	QUERCUS PALUSTRIS	PIN OAK	2.5" CAL.	B&B	
3	TIL	TILLIA AMERICANA	AMERICAN LINDEN	2.5" CAL.	B&B	

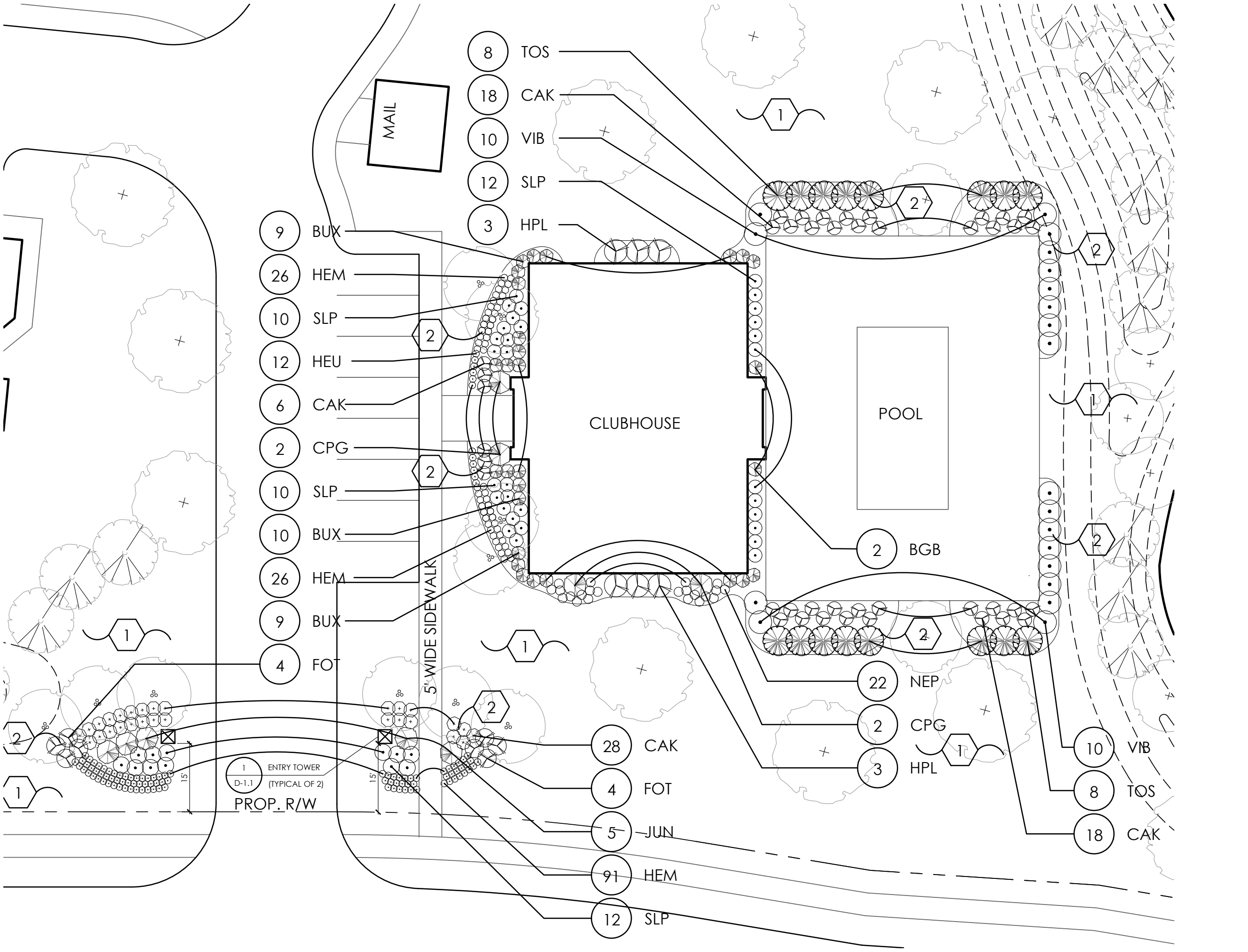


4 GARDEN UNIT TYPICAL LANDSCAPE PLAN
SCALE: 1" = 10'

PLANT LIST - GARDEN UNIT TYPICAL
(CONTRACTOR IS RESPONSIBLE FOR ALL PLANTS SHOWN ON PLAN)

QTY	KEY	BOTANICAL NAME	COMMON NAME	SIZE	COND.	REMARKS
TREES						
1	SWE	MAGNOLIA VIRGINIANA	SWEET BAY MAGNOLIA	6' HT.	B&B	
SHRUBS						
28	SJL	SPIRAEA JAPONICA 'LITTLE PRINCESS'	LITTLE PRINCESS SPIRAEA	18" HT.	B&B	
5	BSG	BUXUS SEMPERVIRENS 'GRAHAM BLANDY'	GRAHAM BLANDY BOXWOOD	36" HT.	B&B	
36	BUX	BUXUS X 'GREEN GEM'	GREEN GEM BOXWOOD	18" HT.	B&B	
4	HQ	HYDRANGEA QUERCIFOLIA	OAKLEAF HYDRANGEA	30" HT.	B&B	
20	LA	LIGUSTRUM AMURENSE	AMUR PRIVET	30" HGT.	B&B	
PERENNIALS/ORNAMENTAL GRASSES						
12	CAK	CALAMAGROTIS X ACUTIFLORA 'KARL FOERSTER'	KARL FOERSTER REED GRASS	NO. 1	CONT.	

*NOTE: ANNUALS TO BE PLANTED BY OWNER. NOT IN INITIAL LANDSCAPE COSTS.



2 CLUBHOUSE & ENTRY LANDSCAPE ENLARGEMENT
SCALE: 1" = 20'

PLANT LIST - CLUBHOUSE AND ENTRY
(CONTRACTOR RESPONSIBLE FOR ALL PLANTS SHOWN ON PLAN)

QTY	KEY	BOTANICAL NAME	COMMON NAME	SIZE	COND.	REMARKS
SHRUBS						
2	BGB	BUXUS SEMPERVIRENS 'GRAHAM BLANDY'	BUXUS GRAHAM BLANDY	30" HGT.	B&B	
26	BUX	BUXUS 'GREEN VELVET'	GREEN VELVET BOXWOOD	18" HGT.	B&B	
16	TOS	THUJA OCCIDENTALIS 'SMARAGD'	EMERALD GREEN ARBORVITAE	42" HGT.	B&B	
4	CPG	CHAMAECYPARIS PISIFERA 'GOLDEN MOP'	GOLDEN MOP THREADED FALSE CYPRESS	30" HGT.	B&B	
8	FOT	FOTHERGILLA MAJOR 'MOUNT AIRY'	MOUNT AIRY FOTHERGILLA	24" HGT.	B&B	
6	HPL	HYDRANGEA PANICULATA 'LIMELIGHT'	LIMELIGHT HARDY HYDRANGEA	36" HGT.	B&B	
5	JUN	JUNIPERUS 'CONFERTA' 'BLUE PACIFIC'	BLUE PACIFIC SHORE JUNIPER	24" HGT.	B&B	
44	SLP	SPIRAEA JAPONICA 'LITTLE PRINCESS'	LITTLE PRINCESS SPIREA	18" HGT.	B&B	
20	VIB	VIBURNUM X CARLCEPHALUM 'CAYUGA'	CAYUGA VIBURNUM	30" HGT.	B&B	
PERENNIALS/ORNAMENTAL GRASSES						
70	CAK	CALAMAGROTIS X ACUTIFLORA 'KARL FOERSTER'	KARL FOERSTER REED GRASS	NO. 1	CONT.	
143	HEM	HEMEROCALLIS 'STELLA D'ORO'	STELLA D'ORO DAYLILY	NO. 1	CONT.	
22	NEP	NEPETA X FAASSENII 'WALKER'S LOW'	WALKER'S LOW CATMINT	NO. 1	CONT.	
12	HEU	HEUCHERA 'SWEET TART'	SWEET TART CORAL BELLS	NO. 1	CONT.	

*NOTE: ANNUALS TO BE PLANTED BY OWNER. NOT IN INITIAL LANDSCAPE COSTS.

GARDEN UNIT LANDSCAPE ENLARGEMENT PLAN

CONCORD HIGHLANDS

PREPARED FOR METRO DEVELOPMENT
DATE: 2/17/20

EXHIBIT D-1.1

Faris Planning & Design

LAND PLANNING LANDSCAPE ARCHITECTURE
243 N. 5th Street Suite 401 Columbus, OH 43215
p (614) 487-1964 f (614) 487-1964 www.farisplanninganddesign.com